



# OPERATIONAL WASTE MANAGEMENT PLAN

PRESENTED TO

**Liscove Limited**  
**Large-Scale Residential Development at**  
**Kilternan, Dublin 18**

DATE

July 24

## DOCUMENT CONTROL SHEET

<b>Client</b>	Liscove Limited
<b>Project Title</b>	Large-Scale Residential Development on Lands at Wayside, Enniskerry Road and Glenamuck Road, Kiltarnan, Dublin 18
<b>Document Title</b>	Operational Waste Management Plan

Rev.	Status	Author(s)	Reviewed by	Approved by	Issue Date
<b>00</b>	Draft for Internal Review	Paul Nolan <i>Environmental Consultant</i>	Charlotte Lawler-Greene <i>Principal Consultant</i>	Charlotte Lawler-Greene <i>Principal Consultant</i>	05.07.2024
<b>01</b>	Draft for Client Review	Paul Nolan <i>Environmental Consultant</i>	Aoife Gillen <i>Principal Consultant</i>	Aoife Gillen <i>Principal Consultant</i>	08.07.2024
<b>02</b>	Final for Client Issue	Paul Nolan <i>Environmental Consultant</i>	Aoife Gillen <i>Principal Consultant</i>	Aoife Gillen <i>Principal Consultant</i>	16.07.2024

## REPORT LIMITATIONS

Synergy Environmental Ltd. t/a Enviroguide Consulting (hereafter referred to as “Enviroguide”) has prepared this report for the sole use of Liscove Limited in accordance with the Agreement under which our services were performed. No other warranty, expressed or implied, is made as to the professional advice included in this Report or any other services provided by Enviroguide.

The information contained in this Report is based upon information provided by others and upon the assumption that all relevant information has been provided by those parties from whom it has been requested and that such information is accurate. Information obtained by Enviroguide has not been independently verified by Enviroguide, unless otherwise stated in the Report.

The methodology adopted and the sources of information used by Enviroguide in providing its services are outlined in this Report.

The work described in this Report is based on the conditions encountered and the information available during the said period of time. The scope of this Report and the services are accordingly factually limited by these circumstances.

All work carried out in preparing this report has used, and is based upon, Enviroguide’s professional knowledge and understanding of the current relevant national legislation. Future changes in applicable legislation may cause the opinion, advice, recommendations or conclusions set-out in this report to become inappropriate or incorrect. However, in giving its opinions, advice, recommendations and conclusions, Enviroguide has considered pending changes to environmental legislation and regulations of which it is currently aware. Following delivery of this report, Enviroguide will have no obligation to advise the client of any such changes, or of their repercussions.

Enviroguide disclaim any undertaking or obligation to advise any person of any change in any matter affecting the Report, which may come or be brought to Enviroguide’s attention after the date of the Report.

Certain statements made in the Report that are not historical facts may constitute estimates, projections or other forward-looking statements and even though they are based on reasonable assumptions as of the date of the Report, such forward-looking statements by their nature involve risks and uncertainties that could cause actual results to differ materially from the results predicted. Enviroguide specifically does not guarantee or warrant any estimate or projections contained in this Report.

Unless otherwise stated in this Report, the assessments made assume that the site and facilities will continue to be used for their current or stated proposed purpose without significant changes.

The content of this report represents the professional opinion of experienced environmental consultants. Enviroguide does not provide legal advice or an accounting interpretation of liabilities, contingent liabilities or provisions.

If the scope of work includes subsurface investigation such as boreholes, trial pits and laboratory testing of samples collected from the subsurface or other areas of the site, and environmental or engineering interpretation of such information, attention is drawn to the fact that special risks occur whenever engineering, environmental and related disciplines are applied to identify subsurface conditions. Even a comprehensive sampling and testing programme implemented in accordance with best practice and a professional standard of care may fail to detect certain conditions. Laboratory testing results are not independently verified by Enviroguide and have been assumed to be accurate. The environmental, ecological, geological, geotechnical, geochemical and hydrogeological conditions that Enviroguide interprets to exist between sampling points may differ from those that actually exist. Passage of time, natural occurrences and activities on and/or near the site may substantially alter encountered conditions.

**Copyright © This Report is the copyright of Enviroguide Consulting and any unauthorised reproduction or usage by any person other than the addressee is strictly prohibited.**

## TABLE OF CONTENTS

REPORT LIMITATIONS .....	II
LIST OF TABLES .....	IV
LIST OF FIGURES .....	IV
<b>1 INTRODUCTION .....</b>	<b>1</b>
<b>2 OVERVIEW OF WASTE MANAGEMENT IN IRELAND .....</b>	<b>2</b>
2.1 EUROPEAN AND IRISH LEGAL CONTEXT .....	2
2.2 WASTE POLICY IN IRELAND .....	3
2.3 NATIONAL WASTE MANAGEMENT PLAN & LOCAL BYE-LAWS .....	4
<b>3 DESCRIPTION OF THE PROJECT .....</b>	<b>6</b>
3.1 DESCRIPTION OF THE DEVELOPMENT .....	6
3.2 PROXIMITY OF THE DEVELOPMENT TO RECYCLING FACILITIES .....	7
<b>4 WASTE GENERATION AND STORAGE .....</b>	<b>9</b>
4.1 LIST OF WASTE CODES .....	9
4.2 RESIDENTIAL .....	10
4.2.1 <i>Waste Types Arising</i> .....	10
4.2.2 <i>Waste Storage Capacity Requirements</i> .....	10
4.2.3 <i>Waste Storage Arrangements</i> .....	18
4.3 COMMERCIAL .....	20
4.3.1 <i>Waste Types Arising</i> .....	20
4.3.2 <i>Waste Storage Capacity Requirements</i> .....	20
4.4 SHARED WASTE STORAGE AREAS .....	27
4.5 OTHER WASTE MATERIALS .....	33
4.6 RECYCLING RATES & TARGETS .....	33
4.7 BIN WEIGHT LIMITS & DIMENSIONS .....	33
<b>5 WASTE COLLECTION .....</b>	<b>35</b>
<b>6 MANAGEMENT SYSTEM .....</b>	<b>37</b>
6.1 INFORMATION AND COMMUNICATION .....	37
6.2 WASTE MANAGEMENT CONTRACTS .....	37
<b>7 CONCLUSIONS .....</b>	<b>38</b>
<b>8 REFERENCES .....</b>	<b>39</b>

## LIST OF TABLES

Table 4-1 Expected Waste Types and List of Waste Codes .....	9
Table 4-2 No. of Houses and types .....	10
Table 4-3 Estimated Waste Volumes for Houses .....	11
Table 4-4 Description and Number of Apartments and Duplexes .....	12
Table 4-5 Estimated Waste Volumes for Apartments and Duplexes.....	13
Table 4-6 Breakdown of Bin Numbers & Capacity for Weekly Collections (Apartments and Duplexes).....	16
Table 4-7 Breakdown of Waste Storage Capacity into Recyclable and Non-Recyclable (Apartments and Duplexes).....	17
Table 4-8 Bins Required for Waste Volumes at Commercial Units .....	22

## LIST OF FIGURES

Figure 3-1 Bring Banks and Civic Amenity Recycling Centre Located in proximity to the Proposed Development (Source: Repak), site location identified with an orange star. ....	8
Figure 4-1 Bin Allocation in Kitchen.....	19
Figure 4-2 Layout of Neighbourhood Centre Block Internal Waste Storage Area .....	24
Figure 4-3 Layout of Commercial and Residential Block A Shared Waste Storage Areas ...	25
Figure 4-4 Layout of Commercial and Residential Block D Shared Waste Storage Area.....	26
Figure 4-5 Location of the Shared Waste Storage Areas (yellow) .....	28
Figure 4-6 Internal Layout of Waste Storage Area Types 1, 2 and 3 .....	29
Figure 4-7 Internal Layout of Waste Storage Area Types 4 and 5 .....	30
Figure 4-8 Internal Layout of Waste Storage Area Type 6.....	31
Figure 4-9 Internal Layout of Waste Storage Area Type 7 and 8.....	32
Figure 5-1 Swept Path Analysis .....	36

# 1 INTRODUCTION

Enviroguide Consulting has produced this Operational Waste Management Plan (OWMP) at the request of Liscove Limited for a Large-Scale Residential Development (LRD) located on lands at Wayside, Enniskerry Road and Glenamuck Road, Kilternan, Dublin 18.

The Proposed Development consists of a mix of apartments, houses, duplexes, Commercial/retail/Community facilities, and a crèche facility. A full project description is included in Section 3 of this report.

The OWMP has been prepared to ensure that the management of waste during the operational phase of the Proposed Development is undertaken in accordance with current legal and industry standards including the 'Waste Management Act 1996, as amended', and associated Regulations including, 'Protection of the Environment Act 2003 as amended', 'Litter Pollution Act 1997 as amended', the 'National Waste Management Plan for a Circular Economy 2024-2030' and 'Dún Laoghaire-Rathdown County Council (Segregation, Storage and Presentation of Household and Commercial Waste) Bye-laws, 2019' (hereinafter referred to as 'the bye-laws').

The plan will be subject to review if a planning permission is granted and any material-changes in the proposed operational strategy will be subject to agreement with Dun Laoghaire-Rathdown County Council at project construction and operational stages.

This OWMP aims to provide a detailed plan for the storage, handling, collection, and transport of the wastes generated at the development in a manner that does not present a risk to human health or the environment, or a risk of common waste related nuisance such as litter or odour.

The OWMP is designed to ensure that waste arising from the operational phase of the project is managed to incentivise waste prevention and to encourage the segregation of waste so that it can be managed in accordance with the Waste Hierarchy. Diversion of waste from landfill and waste prevention will be the overarching philosophy adopted. The plan estimates the type and quantity of waste to be generated from the Proposed Development during the operational phase and provides a strategy for managing the different waste streams.

This OWMP considers the requirements of national and regional waste policy, legislation, and other local authority guidelines. In addition, it takes account of the following guidance:

- *"Sustainable Urban Housing: Design Standards for New Apartments", July 2023 and*
- *BS 5906:2005 Waste management in buildings — Code of practice*

## 2 OVERVIEW OF WASTE MANAGEMENT IN IRELAND

Operational Waste Management Plans are prepared to support planning applications in Ireland. The purpose of this Operational Waste Management Plan is to detail and plan how waste generated during the operational phase of the Proposed Development will be managed. This will include requirements for waste storage provisions, access to authorised waste collection and proximity to additional recycling facilities.

The Proposed Development is located in the Dun Laoghaire-Rathdown County Council (DLRCC) planning district. In preparing this document, consideration has been given to the requirements of the DLRCC Environment Department, national and regional waste policy, legislation, and other Local Authority Guidelines.

### 2.1 European and Irish Legal Context

Waste Legislation in Europe and the Republic of Ireland (hereinafter referred to as “Ireland”) is extensive and often complex.

The Waste Framework Directive (Directive 2008/98/EC of the European Parliament and of the Council of 19 November 2008 on waste) is a core component of waste regulations across Europe. The Waste Framework Directive (which was transposed into Irish law in 2011) ‘S.I. No. 126/2011 - European Communities (Waste Directive) Regulations 2011’, encourages the prevention, recycling, and processing of waste. The Waste Framework legislation establishes the legal structure for the prevention and management of waste in Ireland. It sets out a Waste Hierarchy which priorities waste prevention, preparation for re-use, recycling, and energy recovery. Waste disposal is the last resort and least favourable option. The Directive requires Member States to adopt waste management plans and waste prevention programmes. It also governs the reporting on waste generation, waste treatment, and capacity and sets down mandatory targets for waste diversion, collection, and treatment.

The new WFD (Directive (EU) 2018/851 of the European Parliament, amending Directive 2008/98/EC on waste) was approved by the EU in July 2018, and was transposed into Irish Law in July 2020. The new WFD forms part of the circular Economy Package adopted by the EU; it requires EU Member States to improve their waste management systems, to improve the efficiency of resource use, and to ensure that waste is valued as a resource.

In Ireland, the primary platform for waste legislation is the ‘Waste Management Act 1996, as amended’, and the ‘Protection of the Environment Act 2003, as amended’. ‘The Waste Management Act, as amended’, has been brought into effect by making a series of subordinate regulations, covering a range of specific ‘priority’ waste types such as food waste, waste electrical and electronic equipment, batteries etc. The Act has been further amended by enacting regulations, mainly the Waste Directive Regulations which addresses new EU environmental initiatives and strengthen areas where problems have arisen.

One of the guiding principles of European waste legislation, which has in turn been incorporated into the ‘Waste Management Act, as amended’, and subsequent Irish legislation, is the principle of “Duty of Care”. This implies that the waste producer is responsible for waste from the time it is generated until its legal disposal (including its method of disposal).



As it is not practical in most cases for the waste producer to physically transfer all waste from where it is produced to the final waste treatment destination, waste contractors will be employed to physically transport waste to the final waste destination. It is therefore imperative that residential development management companies undertake on-site management of waste in accordance with all legal requirements and employ appropriately authorised waste contractors to undertake off-site management of their waste in accordance with all legal requirements. This includes the requirement that a waste contractor handle, transport, and reuse/recover/recycle/dispose of waste in a manner that ensures that no adverse environmental impacts occur as a result of any of these activities.

Each appointed Waste Contractor must hold a valid waste collection permit to transport waste which is issued by the National Waste Collection Permit Office (NWCPO). Waste treatment facilities must also be appropriately permitted (Waste Facility Permit or Certificate of Registration) or licensed by the Local Authority or Environmental Protection Agency to accept the waste. The Management Company appointed will be responsible for ensuring that all Waste Contractors hold the appropriate authorisations.

## **2.2 Waste Policy in Ireland**

In addition to waste regulations, Ireland has adopted waste management policies. Waste management policy is adopted by the government and is detailed in a set of policy documents which have been produced since 1998:

- Waste Management: Changing Our Ways (1998)
- Preventing and Recycling Waste: Delivering Change (2002)
- Taking Stock & Moving Forward (2004)
- National Strategy on Biodegradable Waste Management (2006)
- A Resource Opportunity – Waste Management Policy in Ireland (2012)
- A Waste Action Plan for a Circular Economy (2020)

‘A Waste Action Plan for a Circular Economy: Ireland’s National Waste Policy 2020-2025’ was published by the Department of Communications, Climate Action and Environment in September 2020. This policy sets out a number of important policy actions with the aim of transforming the current economic and waste system from linear to circular. These include the following actions:

- A shift towards a policy framework which rewards circularity and moves away from the waste of resources.
- Increased accountability of products that producers place on the market through levies on non-recyclable waste and the overuse of packaging.
- Targets for recycling (65% by 2035), food waste (reduced by 50% by 2030) and waste to landfill (no more than 10% by 2035).
- To support households, awareness and education measures will be strengthened; the waste collection industry will be encouraged to play a role in such measures.
- All Regional Waste Management Plans will be replaced with a National Waste Management Plan for a Circular Economy.
- A standardising of the colour coding of bins (Mixed Municipal Waste (MMW) / General Waste to be designated as a ‘recovery’ bin: colour black; Dry Mixed Recyclables (DMR)



bin: colour green; Glass bin: colour blue, Organic (food) Waste bin to be designated as 'organic waste recycling bin': colour brown).

## 2.3 National Waste Management Plan & Local Bye-laws

The National Waste Management Plan for a Circular Economy 2024 -2030 sets out the framework for the prevention and management of waste across Ireland. This document is a statutory document underpinned by national and EU waste legislation.

The strategic vision of the Plan is to rethink the approach to managing waste, and to move towards a 'circular economy' approach where resources are reused or recycled as much as possible and the overall generation of waste is minimised.

In order to achieve this vision, the Plan has set out a number of specific and measurable performance targets:

- Achieve a recycling rate of 55% by 2025, 60% by 2030 and 65% by 2035
- Mitigate total waste growth to 0% growth per person over the life of the Plan (baseline for total waste generated per person per year is 2.7 tonnes based on NWCPO data).
- 6% aggregate reduction in all residual municipal waste by 2030 (including commercial and household) (Baseline 0.37 tonnes rMSW per person).
- Reduce contamination in municipal bins. This is measured as 'material compliance' which is the fraction of appropriate material placed in each of the residual, recyclable or food waste recycling bins.
  - A material compliance target of 90% in the dry recycling bin as a minimum standard.
  - A target of 10% per annum increase in material compliance in the residual bin is applied in this Plan. This represents a potential 90% material compliance rate by the end of 2030.

The relevant Priority Actions identified by the Plan in regard to the management of Municipal Household Waste are as follows:

- *"Maximise households on kerbside systems, standardise the identification of bins and promote items accepted for recycling using visual representation."*
- *"Identify appropriate segregated waste collection systems for apartments and mixed-use developments and support the waste industry in the implementation of these systems."*

The Dun Laoghaire-Rathdown County Council Storage, Presentation and Collection of Household and Commercial Waste Bye-Laws 2019 (hereinafter referred to as 'the bye-laws') place some additional obligations in how waste is stored and managed at the development. The bye-laws state that "A management company of an apartment complex shall ensure that

adequate numbers of waste containers are available for use by holders of waste in such complex for residual waste, dry recyclable waste and biological waste (where a collection service for such waste fraction is provided).” The number of bins to be provided at this development are further detailed in Section 4.3 of this report.

The bye-laws state the waste is to be separated at source. Any such separated recyclable waste shall not be deposited into a container designated for residual household kerbside waste and no such residual waste shall be deposited into a container designated for recyclable household kerbside waste. Food waste arising must also be separated at source.

Section 8(h) of the bye-laws state “A management company of an apartment complex shall ensure that adequate access and egress is available for refuse freighters collecting waste from such a complex” for the collection of waste. This requirement has been taken into account when designing the development. Sufficient access and egress for waste collection vehicles will be provided.

This OWMP also takes into account the objectives of Chapter 10 of the Dún Laoghaire-Rathdown County Development Plan 2022 – 2028:

**Policy Objective EI11: Resource Management** “It is a Policy Objective to implement the Eastern-Midlands Region Waste Management Plan 2015-2021 and subsequent plans, in supporting the transition from a waste management economy towards a circular economy, to enhance employment and increase the value recovery and recirculation of resources. Underpinning this objective is the requirement to conform to the European Union and National Waste Management Hierarchy of the most favoured options for waste as illustrated below subject to economic and technical feasibility and Environmental Assessment. (Consistent with RPO 10.25 of the RSES).”

**Policy Objective EI12: Waste Management Infrastructure, Prevention, Reduction, Reuse and Recycling (Circular Economy approach)** “To ensure new developments are designed and constructed in line with the Council’s Guidelines for Waste Storage Facilities”

Dún Laoghaire-Rathdown County Council released a Guidance Note in February 2020, “Guidance Notes for Waste Management in Residential and Commercial Developments”. This document sets out requirements for Common Waste Storage Areas design, Waste related requirements within Residential Units, Initial Waste Management, and Waste Collection systems. This document has been consulted in the formulation of the Operational Waste management Plan.

## 3 DESCRIPTION OF THE PROJECT

### 3.1 Description of the Development

The development site is located on lands at Wayside, Enniskerry Road and Glenamuck Road, Kiltarnan, Dublin 18.

The Proposed Development is for the construction of a Large-Scale Residential Development on 2 No. sites, measuring c. 14.2 Ha., which will be separated by the future Glenamuck Distributer Link Road (GLDR). The western site principally comprises lands at Wayside, Enniskerry Road and Glenamuck Road, Kiltarnan, Dublin 18, which include a derelict dwelling known as 'Rockville' and associated derelict outbuildings, Enniskerry Road, Kiltarnan, Dublin 18, D18 Y199 and the former Kiltarnan Country Market, Enniskerry Road, Kiltarnan, Dublin 18, D18 PK09. The western site is generally bounded by the Glenamuck Road to the north; the Sancta Maria property to the north, west and south; a recently constructed residential development named "Rockville" to the north-east; the Enniskerry Road to the south-west; dwellings to the south; and the future GLDR to the east. The eastern site is generally bound by dwellings to the south; the future GLDR to the west; and greenfield land to the north and east.

Road works are proposed to facilitate access to the development from the Enniskerry Road; to the approved Part 8 Enniskerry Road/Glenamuck Road Junction Upgrade Scheme on Glenamuck Road (DLRCC Part 8 Ref. PC/IC/01/17); and to the approved Glenamuck District Roads Scheme (GDRS) (ABP Ref. HA06D.303945) on the Glenamuck Link Distributor Road (GLDR). Drainage and potable water infrastructure is proposed to connect to services on the Glenamuck Road, Enniskerry Road and the GLDR.

At the 'Rockville access point', works are proposed to provide a multi-modal access, including a vehicular connection between the proposed development and the Rockville development (permitted under DLR Reg. Ref. D18A/0566). The new access will require the removal of the existing as-built hammerhead turning area at Rockville to create this new connection. The residual hammerhead area will be landscaped to tie into the adjoining landscape strategy. The above works are inclusive of all necessary tie-in works such as new kerbs, drainage details, road marking, signage, and public lighting.

The development will principally consist of: the demolition of c. 740 sq m of existing structures on site comprising a derelict dwelling known as 'Rockville' and associated derelict outbuildings (c. 573 sq m) and the former Kiltarnan Country Market (wooden structure) (c. 167 sq m); and the provision of a mixed-use development principally consisting of 487 No. residential units (196 No. houses, 201 No. duplex units and 90 No. apartments) and a Neighbourhood Centre. The western site will comprise 362 No. residential units and the Neighbourhood Centre, which will provide an anchor retail store (c. 1,310 sq m), retail/commercial (c. 3,284 sq m), a restaurant (c. 182 sq m), a creche (c. 691 sq m), café (c. 326 sq m), and a community facility (c. 332 sq m), and the eastern site will comprise 125 No. residential units. The 487 No. residential units will consist of 53 No. 1 bedroom units (35 No. apartments and 18 No. duplexes), 150 No. 2 bedroom units (38 No. houses, 16 No. apartments and 96 No. duplexes), 236 No. 3 bedroom units (110 No. houses, 39 No. apartments and 87 No. duplexes) and 48 No. 4 bedroom units (48 No. houses). The proposed development will range in height from 2

No. to 4 No. storeys (partially over podium/undercroft level in Apartment Blocks 1, 2 and 3 and Duplex Blocks T and U on the eastern site).

The development also provides: a pedestrian/cycle route through the Dingle Way from Enniskerry Road to the future Glenamuck Link Distributor Road; 854 No. car parking spaces (125 No. in the undercroft of Apartment Blocks 1, 2 and 3 and Duplex Blocks T and U and 729 No. at surface level) including 28 No. mobility impaired spaces, 100 No. electric vehicle spaces, 2 No. car share spaces, and 4 No. drop-off spaces/loading bays; motorcycle parking; bicycle parking; bin storage; provision of new telecommunications infrastructure at roof level of the Neighbourhood Centre including shrouds, antennas and microwave link dishes (18 No. antennas, all enclosed in 9 No. shrouds and 6 No. transmission dishes, together with all associated equipment); private balconies, terraces and gardens; hard and soft landscaping; sedum roofs; solar panels; boundary treatments; lighting; substations; plant; and all other associated site works above and below ground. The proposed development has a gross floor area of c. 60,504 sq m above ground, in addition to an undercroft/basement (c. 4,485 sq m) containing car parking, bike storage, bin storage and plant under Apartment Blocks 1, 2 and 3 and Duplex Blocks T and U on the eastern site.

The Operational Waste Management Plan addresses waste management for the development once it is operational i.e., post the construction phase.

### **3.2 Proximity of the Development to Recycling Facilities**

The development site is located at Wayside, Enniskerry Road and Glenamuck Road, Kilternan, Dublin 18. Figure 3-1 presents the proximity of the development site to local bring bank facilities. There is a large civic amenity centre in Carrickmines servicing the Kilternan area, with numerous bring banks throughout the region for glass bottle collection.

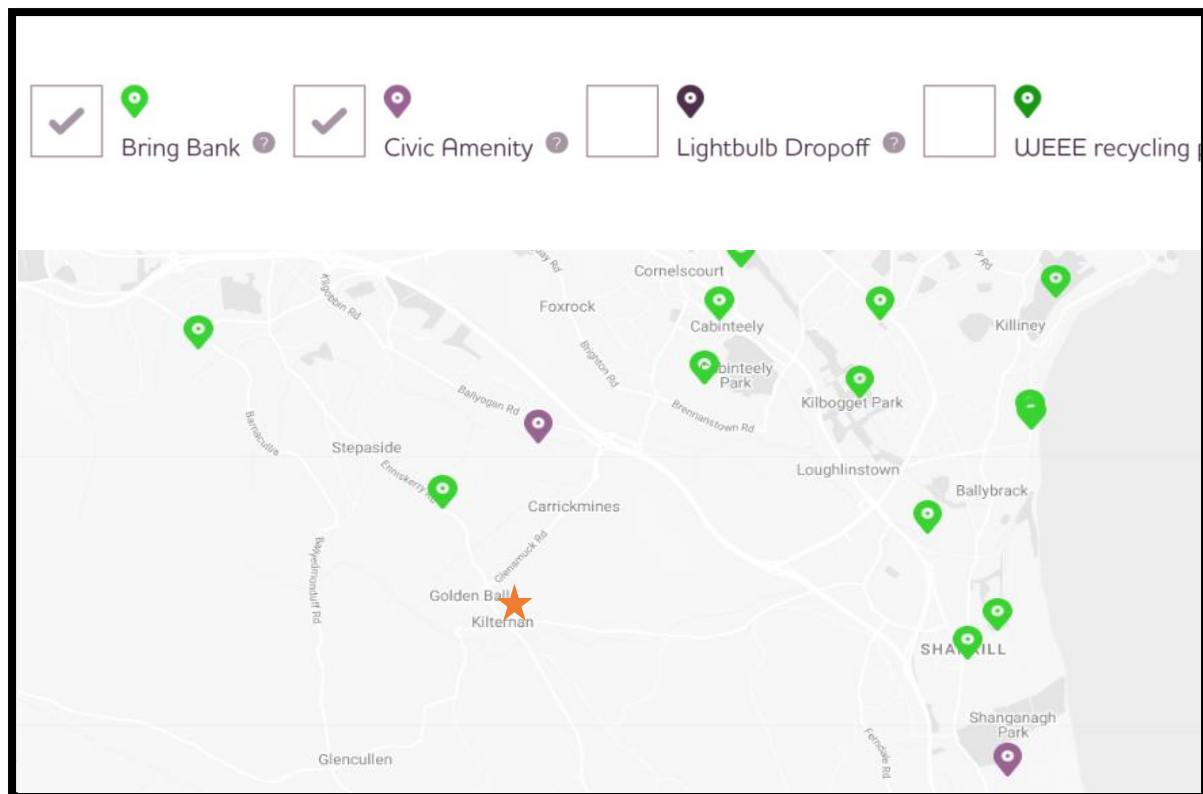


Figure 3-1 Bring Banks and Civic Amenity Recycling Centre Located in proximity to the Proposed Development (Source: Repak), site location identified with an orange star.

## 4 WASTE GENERATION AND STORAGE

### 4.1 List of Waste Codes

Correct classification of waste is the foundation for ensuring that the collection, transportation, storage, and treatment of waste is carried out in a manner that provides protection for the environment and human health and in compliance with legal requirements. In 1994, the 'European Waste Catalogue' was published by the European Commission. In 2002, the EPA published a document titled the 'European Waste Catalogue and Hazardous Waste List'. This document has been replaced by the EPA 'Waste Classification – List of Waste & Determining if Waste is Hazardous or Non-Hazardous' which became valid from the 1<sup>st</sup> of July 2018.

The waste classification system applies across the EU and is the basis for all national and international waste reporting obligations such as those associated with waste collection permits, certificates of registration, waste facility permits and EPA Waste and IED licences and EPA National Waste Database.

The EPA document 'Waste Classification – List of Waste & Determining if Waste is Hazardous or Non-Hazardous' (EPA, 2018) consolidates the legislation and allows the generators of waste to classify the waste as hazardous or non-hazardous and in the process to assign the correct List of Waste entry.

Under the classification system, different types of wastes are fully defined by a code. The List of Waste (LoW) code (previously referred to as European Waste Code or EWC) for typical waste materials expected to be generated during the operation of the Proposed Development are provided in Table 4-1.

Table 4-1 Expected Waste Types and List of Waste Codes

Waste Description	List of Waste Code
Mixed Municipal Waste	20 03 01
Dry Mixed Recyclables	20 03 01
Biodegradable Kitchen Waste	20 01 08
Glass	20 01 02
Bulky wastes	20 03 07
Waste electrical and electronic equipment*	20 01 35* 21 01 36
Batteries and accumulators*	20 01 33* 20 01 34
Textiles	20 01 11
Fluorescent tubes and other mercury containing waste*	20 01 21
Chemicals (solvents, pesticides, paints & adhesives, detergents, etc.)*	20 01 13/19/27-28/29-30

<b>Plastic</b>	20 01 39
<b>Metals</b>	20 01 40
<b>Paper and Cardboard</b>	20 01 01

*\*Individual waste type may contain hazardous materials*

## 4.2 Residential

### 4.2.1 Waste Types Arising

The predicted waste types that will be generated at the Proposed Developments residential units include the following:

- i. Mixed Municipal Waste (MMW) / General Waste;
- ii. Dry Mixed Recyclables (DMR) - including cardboard, plastic packaging, aluminium cans, tins, paper, and Tetra Pak cartons;
- iii. Organic (food) Waste; and
- iv. Glass.

In addition to the typical waste materials that will be generated daily, there will be some additional waste types generated in small quantities that will need to be managed separately including:

- Bulky wastes – including furniture, carpets, mattresses;
- Waste electrical and electronic equipment (WEEE);
- Batteries;
- Textiles – clothes or soft furnishings;
- Light bulbs or fluorescent tubes;
- Chemicals – old medicines, paints, detergents; and
- Waste oil - cooking oil.

### 4.2.2 Waste Storage Capacity Requirements

#### 4.2.2.1 Houses

The following housing types and numbers will be provided the development:

*Table 4-2 No. of Houses and types*

House Type	Description	No. Beds	Access	No.
A1	Semi Detached	4	Ground Floor	15
A2	Semi Detached, Side entry	4	Ground Floor	5
A3	Detached	4	Ground Floor	1
C1	Semi Detached/Terrace	3	Ground Floor	52
C2	Mid Terrace	3	Ground Floor	42
C3	Semi Detached/Terrace, side entry	3	Ground Floor	8



C4	Terrace, side entry	4	Ground Floor	2
D1	Semi Detached	4	Ground Floor	5
D2	Semi Detached	3	Ground Floor	5
E	Semi Detached	4	Ground Floor	15
E1	Semi Detached	4	Ground Floor	1
F	Semi Detached, Side entry	4	Ground Floor	3
F1	Semi Detached	4	Ground Floor	1
H2	Terrace	2	Ground Floor	25
H3	Terrace, side entry	2	Ground Floor	13
J	Semi Detached/Terrace	3	Ground Floor	3

The number of bedrooms is required to complete the calculations of waste volumes generated as per the *BS 5906:2005 Waste management in buildings — Code of practice*. The calculation for typical weekly waste arisings and subsequent storage requirements for domestic dwellings is as follows:

$$\text{number of dwellings} \times \{(\text{volume arising per bedroom [70 L]} \times \text{average number of bedrooms}) + 30\}^a$$

<sup>a</sup> Based on average household occupancy.

Table 4-3 below includes the calculations of waste arising using the formula provided in the *BS 5906:2005 Waste management in buildings — Code of practice*. Table 4-3 details the number of dwellings for each accommodation type. The volume arising per bedroom is assumed to be 70 litres (L) as per the calculation formula provided. An additional 30L is added onto every dwelling for each calculation. It is expected that this additional volume is to allow for sufficient storage capacity in periods of seasonal variations resulting in high waste generation. The total volume of waste generated weekly from the houses is 47,770L per week, or an average of 240L per house per week.

Table 4-3 Estimated Waste Volumes for Houses

House Type	No. of dwellings	Volume waste generated per Bedroom (70L)	No. of Bedrooms	Additional 30L	Total Litres All Units	Total Litres Per Unit per week
2 Bed House	38	70	2	30	6,460	170
3 Bed House	110	70	3	30	26,400	240
4 Bed House	48	70	4	30	14,880	310
Total dwellings	196			Total litres	47,770	240

#### 4.2.2.2 Apartments and Duplexes

For the apartment and duplex buildings, it is necessary to calculate the required bin storage capacity based on the number of units and the number of bedrooms in each unit. The capacity requirements have been based on a worst-case scenario of full occupancy and collections of

bins every week. It should be noted that this leaves scope for increased frequency of collections should this ever be required.

*Table 4-4 Description and Number of Apartments and Duplexes*

	1 BED	2 BED	3 BED	Total
Duplex Block A	0	8	4	12
Duplex Block B	3	1	4	8
Duplex Block C	0	3	2	5
Duplex Block D	0	2	4	6
Duplex Block E	3	0	3	6
Duplex Block F	1	12	11	24
Duplex Block G	0	6	6	12
Duplex Block H	0	6	6	12
Duplex Block J	0	6	6	12
Duplex Block K	0	4	4	8
Duplex Block L	0	8	8	16
Duplex Block M & N	0	8	8	16
Duplex Block P	0	5	5	10
Duplex Block Q	0	4	4	8
Duplex Block R	0	6	6	12
Duplex Block S	6	8	2	16
Duplex Block T	0	4	4	8
Apartment Blocks 1,2,3 & Duplex Block U	40	21	39	100
<b>Total</b>	<b>53</b>	<b>112</b>	<b>126</b>	<b>291</b>

The British Standard BS5906:2005 *Waste management in buildings — Code of practice* provides guidance in respect of waste generation for domestic and commercial premises to calculate the storage, containment, and equipment requirements for effective waste management. Calculations provided in this British Standard document have been used to calculate the waste storage capacity requirements for the apartments and duplexes in this Proposed Development. Table 4-4 details the Schedule of Accommodation for apartments and duplexes.

The number of bedrooms is required to complete the calculations of waste volumes generated as per the *BS 5906:2005 Waste management in buildings — Code of practice*.

The calculation for typical weekly waste arisings and subsequent storage requirements for domestic dwellings is as follows:

$$\text{number of dwellings} \times \{(\text{volume arising per bedroom [70 L]} \times \text{average number of bedrooms}) + 30\}^a$$

<sup>a</sup> Based on average household occupancy.

Table 4-5 below includes the calculations of waste arising using the formula provided in the *BS 5906:2005 Waste management in buildings — Code of practice*. Table 4-5 details the number of bins required to service the volume of waste arisings. The volume arising per

bedroom is assumed to be 70 litres (L) as per the calculation formula provided. An additional 30L is added onto every dwelling for each calculation. It is expected that this additional volume is to allow for sufficient storage capacity in periods of seasonal variations resulting in high waste generation.

*Table 4-5 Estimated Waste Volumes for Apartments and Duplexes*

Block A					
Type	No. of dwellings	Volume per Bedroom (70L)	No. of Bedrooms	Additional 30L	Total Litres /Unit/Week
1 Bed	0	70	1	30	0
2 Bed	8	70	2	30	1,360
3 Bed	4	70	3	30	960
	12		Total Litres		2,320
Block B					
Type	No. of dwellings	Volume per Bedroom (70L)	No. of Bedrooms	Additional 30L	Total Litres /Unit/Week
1 Bed	3	70	1	30	300
2 Bed	1	70	2	30	170
3 Bed	4	70	3	30	960
	8		Total Litres		1,430
Block C					
Type	No. of dwellings	Volume per Bedroom (70L)	No. of Bedrooms	Additional 30L	Total Litres /Unit/Week
1 Bed	0	70	1	30	0
2 Bed	3	70	2	30	510
3 Bed	2	70	3	30	480
	5		Total Litres		990
Block D					
Type	No. of dwellings	Volume per Bedroom (70L)	No. of Bedrooms	Additional 30L	Total Litres /Unit/Week
1 Bed	0	70	1	30	0
2 Bed	2	70	2	30	340
3 Bed	4	70	3	30	960
	6		Total Litres		1,300
Block E					
Type	No. of dwellings	Volume per Bedroom (70L)	No. of Bedrooms	Additional 30L	Total Litres /Unit/Week
1 Bed	3	70	1	30	300
2 Bed	0	70	2	30	0
3 Bed	3	70	3	30	720
	6		Total Litres		1,020

Block F					
Type	No. of dwellings	Volume per Bedroom (70L)	No. of Bedrooms	Additional 30L	Total Litres /Unit/Week
1 Bed	1	70	1	30	100
2 Bed	12	70	2	30	2,040
3 Bed	11	70	3	30	2,640
	24		Total Litres		4,780
Block G					
Type	No. of dwellings	Volume per Bedroom (70L)	No. of Bedrooms	Additional 30L	Total Litres /Unit/Week
1 Bed	0	70	1	30	0
2 Bed	6	70	2	30	1,020
3 Bed	6	70	3	30	1,440
	12		Total Litres		2,460
Block H					
Type	No. of dwellings	Volume per Bedroom (70L)	No. of Bedrooms	Additional 30L	Total Litres /Unit/Week
1 Bed	0	70	1	30	0
2 Bed	6	70	2	30	1,020
3 Bed	6	70	3	30	1,440
	12		Total Litres		2,460
Block J					
Type	No. of dwellings	Volume per Bedroom (70L)	No. of Bedrooms	Additional 30L	Total Litres /Unit/Week
1 Bed	0	70	1	30	0
2 Bed	6	70	2	30	1,020
3 Bed	6	70	3	30	1,440
	12		Total Litres		2,460
Block K					
Type	No. of dwellings	Volume per Bedroom (70L)	No. of Bedrooms	Additional 30L	Total Litres /Unit/Week
1 Bed	0	70	1	30	0
2 Bed	4	70	2	30	680
3 Bed	4	70	3	30	960
	8		Total Litres		1,640
Block L					
Type	No. of dwellings	Volume per Bedroom (70L)	No. of Bedrooms	Additional 30L	Total Litres /Unit/Week
1 Bed	0	70	1	30	0
2 Bed	8	70	2	30	1,360
3 Bed	8	70	3	30	1,920
	16		Total Litres		3,280

Block M & N					
Type	No. of dwellings	Volume per Bedroom (70L)	No. of Bedrooms	Additional 30L	Total Litres /Unit/Week
1 Bed	0	70	1	30	0
2 Bed	8	70	2	30	1,360
3 Bed	8	70	3	30	1,920
	16		Total Litres		3,280
Block P					
Type	No. of dwellings	Volume per Bedroom (70L)	No. of Bedrooms	Additional 30L	Total Litres /Unit/Week
1 Bed	0	70	1	30	0
2 Bed	5	70	2	30	850
3 Bed	5	70	3	30	1,200
	10		Total Litres		2,050
Block Q					
Type	No. of dwellings	Volume per Bedroom (70L)	No. of Bedrooms	Additional 30L	Total Litres /Unit/Week
1 Bed	0	70	1	30	0
2 Bed	4	70	2	30	680
3 Bed	4	70	3	30	960
	8		Total Litres		1,640
Block R					
Type	No. of dwellings	Volume per Bedroom (70L)	No. of Bedrooms	Additional 30L	Total Litres /Unit/Week
1 Bed	0	70	1	30	0
2 Bed	6	70	2	30	1,020
3 Bed	6	70	3	30	1,440
	12		Total Litres		2,460
Block S					
Type	No. of dwellings	Volume per Bedroom (70L)	No. of Bedrooms	Additional 30L	Total Litres /Unit/Week
1 Bed	6	70	1	30	600
2 Bed	8	70	2	30	1,360
3 Bed	2	70	3	30	480
	16		Total Litres		2,440
Block T					
Type	No. of dwellings	Volume per Bedroom (70L)	No. of Bedrooms	Additional 30L	Total Litres /Unit/Week
1 Bed	0	70	1	30	0
2 Bed	4	70	2	30	680
3 Bed	4	70	3	30	960
	8		Total Litres		1,640

Apartment Blocks 1,2,3 & Duplex Block U					
Type	No. of dwellings	Volume per Bedroom (70L)	No. of Bedrooms	Additional 30L	Total Litres /Unit/Week
1 Bed	40	70	1	30	4,000
2 Bed	21	70	2	30	3,570
3 Bed	39	70	3	30	9,360
	100		Total Litres		16,930
Total Weekly waste arising, (Apartments and Duplex's) in Litres					54,580

The calculations completed in Table 4-5 conclude that the typical weekly waste arising is 54,580L.

Based on weekly waste collections, there would therefore be a requirement to accommodate storage for a volume of 54,580L, or the equivalent of 50 no. 1,110L wheeled bins.

Based on weekly waste collections, it is anticipated that 32 no.1,100L bins, 27 no. 660L bins, 20 no. 240L bins and 26 no. 140L bins (or equivalent) will be required in the waste storage areas as detailed in Table 4-6 below (15 no. 1,100L bins and 9 no. 660L bins for Mixed Municipal Waste (MMW), 17 no. 1,100L bins and 18 no. 660L bins for Dry Mixed Recyclables (DMR), 10 no. 140L bins and 15 no. 240L bins for Organic (food) Waste, and 16 no. 140L bins and 5 no. 240L bins for Glass). The percentage of recyclable and non-recyclable wastes are set out in Table 4-7.

*Table 4-6 Breakdown of Bin Numbers & Capacity for Weekly Collections (Apartments and Duplexes)*

No. of Bins	Size of Bins	Total Litre Capacity	Waste Type
16	140	2,240	Glass
5	240	1,200	Glass
10	140	1,400	Organic (food) Waste
15	240	3,600	Organic (food) Waste
18	660	11,880	Dry Mixed Recyclables (DMR)
17	1,100	18,700	Dry Mixed Recyclables (DMR)
9	660	5,940	Mixed Municipal Waste (MMW)
15	1,100	16,500	Mixed Municipal Waste (MMW)
<b>TOTAL</b>		<b>61,460</b>	

*Table 4-7 Breakdown of Waste Storage Capacity into Recyclable and Non-Recyclable (Apartments and Duplexes)*

		Waste Types to be Generated								Total Storage Volume Required per WSA
		Glass		Organic (food) Waste		Dry Mixed Recyclables (DMR)		Mixed Municipal Waste (MMW)		
WSA ID	Total No. of Units	Bin Capacity (l)	No. bins required	Bin Capacity (l)	No. bins required	Bin Capacity (l)	No. bins required	Bin Capacity (l)	No. bins required	
Apartment Blocks 1,2,3 & Duplex Block U	100	240	4	240	6	1,100	8	1,100	6	17,800
Duplex Block T	8	140	1	140	1	1,100	1	660	1	2,040
Duplex Block G	12	140	1	240	1	660	2	1,100	1	2,800
Duplex Block H	12	140	1	240	1	660	2	1,100	1	2,800
Duplex Block J	12	140	1	240	1	660	2	1,100	1	2,800
Duplex Block K	8	140	1	140	1	1,100	1	660	1	2,040
Duplex Block E	6	140	1	140	1	660	1	660	1	1,600
Duplex Block F	24	240	1	240	2	1,100	2	1,100	2	5,120
Duplex Block A	12	140	1	140	2	660	2	660	1	2,400
Duplex Block B	8	140	1	140	1	660	1	660	1	1,600
Duplex Block C	5	140	1	140	1	660	1	660	1	1,600
Duplex Block D - Mixed use Block	6	140	1	140	1	660	1	660	1	1,600
Duplex Block L	16	140	1	240	1	1,100	2	1,100	1	3,680
Duplex Blocks M & N	16	140	1	240	1	1,100	2	1,100	1	3,680
Duplex Block P	10	140	1	140	1	660	2	660	1	2,260
Duplex Block Q	8	140	1	140	1	1,100	1	660	1	2,040
Duplex Block R	12	140	1	240	1	660	2	1,100	1	2,800
Duplex Block S	16	140	1	240	1	660	2	1,100	1	2,800
		3,440		5,000		30,580		22,440		61,460
% Of waste type		5.6%		8.1%		49.8%		36.5%		100.00%
		63%						37%		



The total capacity of the number of bins actually provided is 61,460L (or the equivalent of just under 56 no. 1100L wheeled bins) which exceeds the required capacity for weekly collections.

On this basis, the bin storage capacity comfortably allows for weekly collections which is more efficient, leaving adequate contingency to increase collection frequency should that be required during unusually high-volume periods such as Christmas.

#### **4.2.3 Waste Storage Arrangements**

##### **4.2.3.1 Houses**

All houses are provided with rear gardens. All houses have space within the curtilage of the dwelling to facilitate a three-bin system for the collection in standard 240 litre wheelie bins for Mixed Municipal Waste (MMW) / General Waste, Dry Mixed Recyclables (DMR) and 120 litre wheelie bins for Organic (food) Waste. The bins provided will be typical of the widely rolled out “three bin system” which is provided as standard by the waste management contractor, conforming to the requirements for residents to source segregate organic and recyclable waste from the non-recyclable waste stream.

It is concluded that adequate capacity is provided for the estimated volume of waste arising at each dwelling (as detailed in Table 4-3), through the provision of ample storage space for a three wheelie bin collection system of approximately 600 litre capacity with space for larger bins if required, based on fortnightly collections, and taking into account that glass bottles generated will be recycled by the occupants at nearby bring bank facilities.

##### **4.2.3.2 Apartments and Duplexes**

A number of dedicated, shared Waste Storage Areas are provided within the communal amenity spaces to serve the apartment and duplex units. These Waste Storage Areas are centrally located to ensure security and ease of access for residents throughout the development.

Residents will be required to segregate waste into the following waste categories:

- Mixed Municipal Waste (MMW) / General Waste;
- Dry Mixed Recyclables (DMR) - includes cardboard, plastic packaging, aluminium cans, tins, paper, and Tetra Pak cartons;
- Organic (food) Waste; and
- Glass.

The layout and design of the apartments and duplexes will ensure that there is adequate provision for the temporary storage of segregated materials prior to deposition in communal Waste Storage Areas. Adequate space is allocated in the kitchen area to accommodate a three-compartment bin for waste segregation at source. In-sink macerators will not be provided in the apartments and duplexes.



A number of Waste Storage Areas have been allocated for the apartment and duplex residents at ground level. It will be the responsibility of the residents to bring their segregated waste to Waste Storage Areas and place into the appropriately labelled bins. Each bin will be clearly labelled to identify what wastes can and cannot be placed in the bin and labels will be pictorial. The route to the Waste Storage Areas, and the area itself, will be wheelchair accessible, adequately lit, and appropriately ventilated.

Any additional household wastes such as bulky waste, WEEE, batteries, textiles etc. must be brought by the apartment residents to a local recycling facility.



**Enviroguide**  
CONSULTING

## **4.3 Commercial**

### **4.3.1 Waste Types Arising**

The commercial facilities will generate similar waste types to residential waste types;

- i. Mixed Municipal Waste (MMW) / General Waste;
- ii. Dry Mixed Recyclables (DMR) - includes cardboard, plastic packaging, aluminium cans, tins, paper, and Tetra Pak cartons;
- iii. Organic (food) Waste

In addition to the typical waste materials that will be generated on a daily basis, there will be some additional waste types generated in small quantities that will need to be managed separately including:

- 'Office' type wastes such as paper and printer ink;
- Waste electrical and electronic equipment (WEEE);
- Batteries;
- Glass; and
- Light bulbs or fluorescent tubes.

### **4.3.2 Waste Storage Capacity Requirements**

For the commercial units, it is necessary to calculate the required bin storage capacity based on the floor area of the units.

#### **4.3.2.1 Neighbourhood Centre Block**

It is estimated, based on the floor area of the facility, that there will be a requirement for 10 no. 1100 Litre bin for Dry Mixed Recyclables (DMR), 6 no. 1100 Litre bin for Mixed Municipal Waste (MMW) / General Waste, 6 no. 240 litre bins for Organic (food) Waste, and 3 no. 240 litre bins for Glass.

#### **4.3.2.2 Creche**

The crèche will generate similar waste types to the domestic dwellings. It is estimated, based on the floor area of the facility, that there will be a requirement for 3 no. 1100 Litre bin for Dry Mixed Recyclables (DMR), 3 no. 1100 Litre bin for Mixed Municipal Waste (MMW), 1 no. 140 litre bin for Organic (food) Waste, and 1 no. 140 litre bin for Glass if required. Ample space is provided in the shared Waste Storage Area to accommodate these receptacles. The crèche may also generate some office type waste, it will be incumbent on the occupier to arrange collection of materials such as ink cartridges.

#### **4.3.2.3 Café**

It is estimated, based on the floor area of the café, that there will be a requirement for 2 no. 660 Litre bin for Dry Mixed Recyclables (DMR), 2 no. 660 Litre bin for Mixed Municipal Waste (MMW) / General Waste, 2 no. 140 litre bins for Organic (food) Waste, and 2 no. 140 litre bins for Glass.

#### **4.3.2.4 Commercial, Community and Food and Beverage**

There is a requirement for Commercial, Community and Food and Beverage waste storage within Blocks A and D.

##### *Commercial and food and beverage waste stored in Block A*

It is estimated, based on the floor area of the facility, that there will be a requirement for 3 no. 1100 Litre bin for Dry Mixed Recyclables (DMR), 3 no. 1100 Litre bin for Mixed Municipal Waste (MMW) / General Waste, 2 no. 140 litre bins for Organic (food) Waste, and 1 no. 140 litre bins Glass.

##### *Commercial and community waste stored in Block D*

It is estimated, based on the floor area of the facility, that there will be a requirement for 2 no. 1100 Litre bin for Dry Mixed Recyclables (DMR), 2 no. 1100 Litre bin for Mixed Municipal Waste (MMW) / General Waste, 3 no. 140 litre bins for Organic (food) Waste, and 2 no. 140 litre bins Glass.

Ample space is provided in the shared Waste Storage Areas to accommodate these receptacles. The commercial and community units may also generate some office type waste, it will be incumbent on the occupier to arrange collection of materials such as ink cartridges.

Table 4-8 below details the number of bins required to service the volume of waste arising.

Table 4-8 Bins Required for Waste Volumes at Commercial Units

			Organic (food) Waste	Organic (food) Waste	Glass	Glass	Dry Mixed Recyclables (DMR)	Dry Mixed Recyclables (DMR)	Mixed Municipal Waste (MMW)	Mixed Municipal Waste (MMW)
Bin Size	Description	m2	140 (L)	240 (L)	140 (L)	240 (L)	1,100 (L)	660 (L)	1,100 (L)	660 (L)
Commercial Unit	Neighbourhood Centre Block	3,901	0	6	0	3	10	0	6	0
	Commercial (Block A)	706	2	0	1	0	3	0	3	0
	Commercial (Block D)	501	3	0	2	0	2	0	2	0
	Café	326	2	0	2	0	0	2	0	2
	Creche	691	1	0	1	0	3	0	3	0
	Total	6,125								

Ample space is provided in the secure Commercial Waste Storage Area to accommodate these receptacles. The Commercial Waste Storage Area will only be accessible to the commercial unit staff members and will not be accessible to residents or members of the public. The commercial units are expected to generate similar waste types to the domestic dwellings as well as volumes of packaging waste. It will be incumbent on the occupier to arrange collection of materials such as ink cartridges.







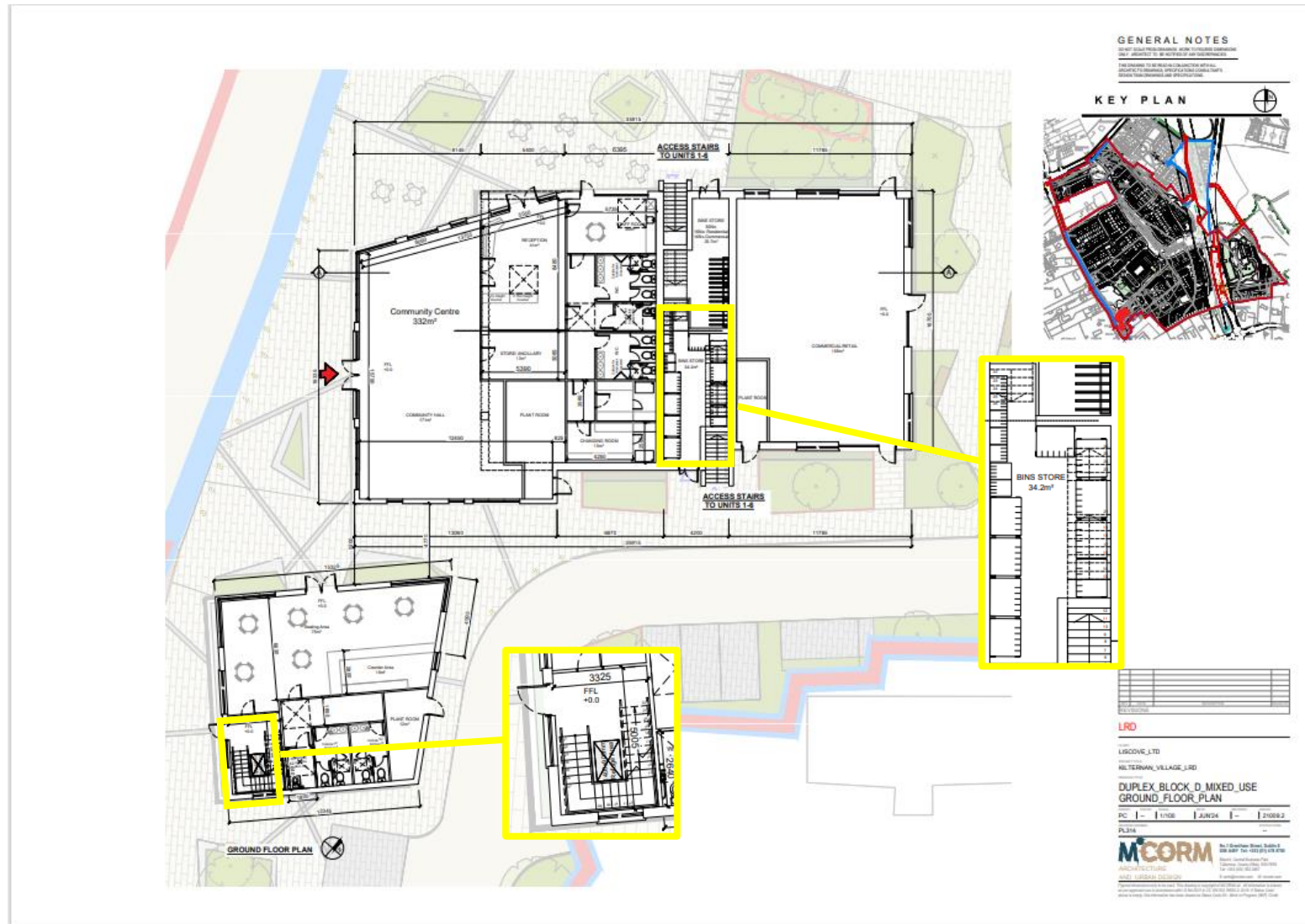


Figure 4-4 Layout of Commercial and Residential Block D Shared Waste Storage Area

## 4.4 Shared Waste Storage Areas

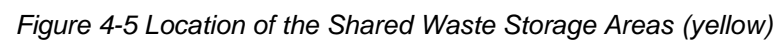
The Department of Housing, Planning and Local Government published guidelines in July 2023– “*Sustainable Urban Housing: Design Standards for New Apartments*”. These Guidelines detail the provisions that need to be made for the storage and collection of waste materials in apartment schemes. These guidelines have been considered when preparing the design of the Waste Storage Areas.

The Waste Storage Areas for this residential development are strategically located and will have the following provisions as minimum:

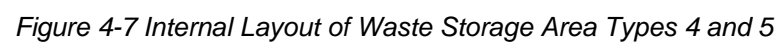
- i. **Access:** The Waste Storage Area will be accessible for the mobility impaired.
- ii. **Lighting:** The Waste Storage Area will have adequate lighting. This is to ensure that waste will not be tipped in dimly lit areas and that the areas do not pose as a safety risk.
- iii. **Spillage & drainage:** A non-slip surface will be provided to prevent slips or falls, and the Waste Storage Area will have adequate drainage which will be directed to foul sewer.
- iv. **Security:** The Waste Storage Area will have restricted access and will be accessible by tenants and residents only. This is to prevent unauthorised access to the bins by the general public.
- v. **Screening:** The Waste Storage Area will be appropriately screened to ensure it is not visible to the general public.
- vi. **Ventilation:** A natural vent will be provided. All vents will be ducted to an external opening so that the Waste Storage Area will not cause an odour nuisance, taking into account the avoidance of nuisance for habitable rooms nearby.
- vii. **Signage:** Pictorial signage will be provided to show residents and tenants what wastes can and cannot be placed in each bin. All signage will be provided by the management company appointed.
- viii. **Environmental nuisance:** The Waste Storage Area will be in an enclosed area to avoid environmental nuisances such as litter. Regular waste collections will be required from the waste collection providers to prevent any other environmental nuisances such as odour or vermin. The management company appointed will be required to ensure there is adequate vermin control in place.
- ix. **Vehicular Access:** The development has been designed to ensure that waste collection vehicles can safely access the development to collect the bins. Vehicular access for waste collection is included in the traffic management plan for the development.

Duplexes and apartments are provided with shared Waste Storage Areas containing a four-bin wheelie bin system (See Figure 4-5 for Location). Figures 4-6 to 4-9 details the internal layout of the shared Waste Storage Areas.









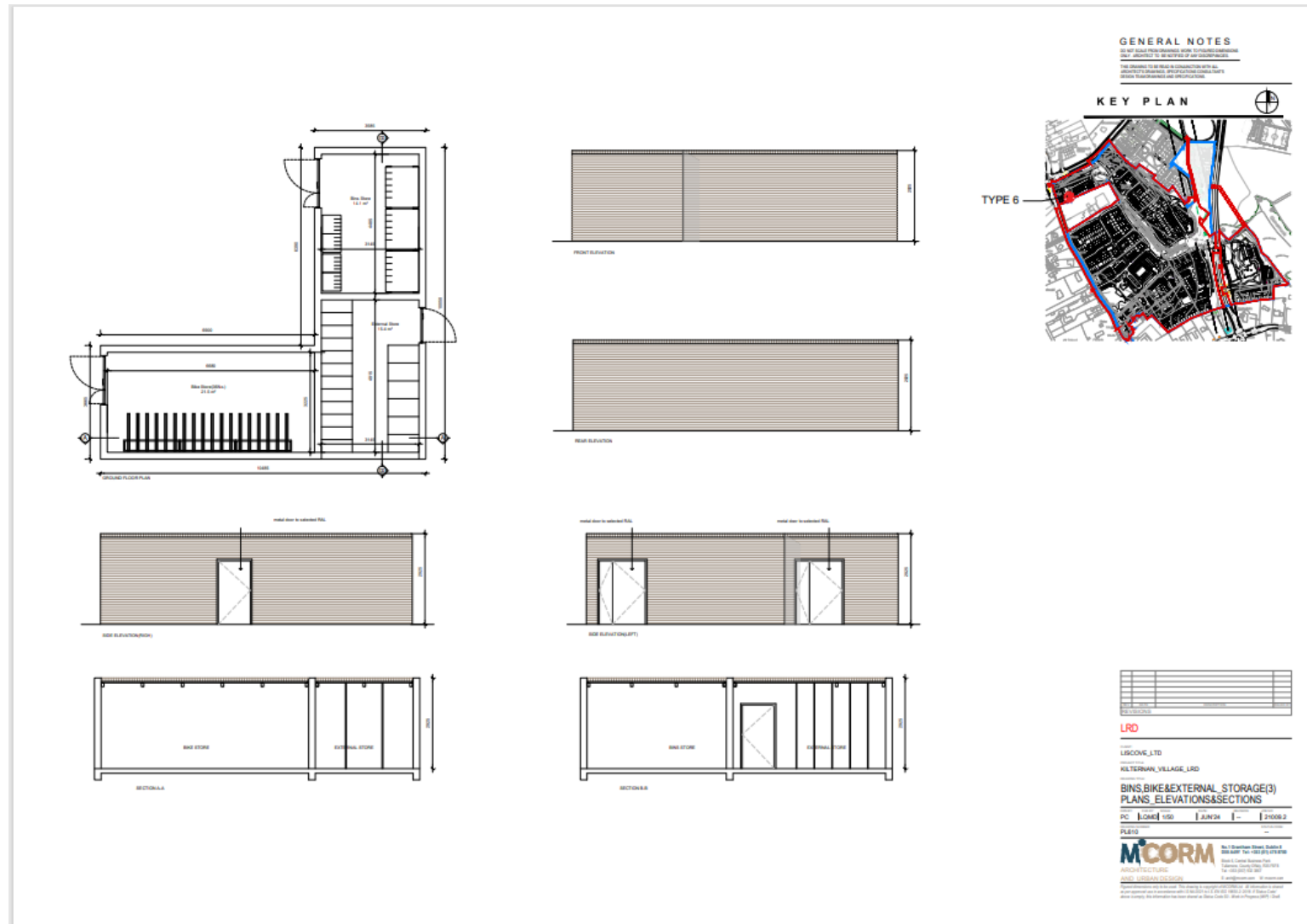


Figure 4-8 Internal Layout of Waste Storage Area Type 6



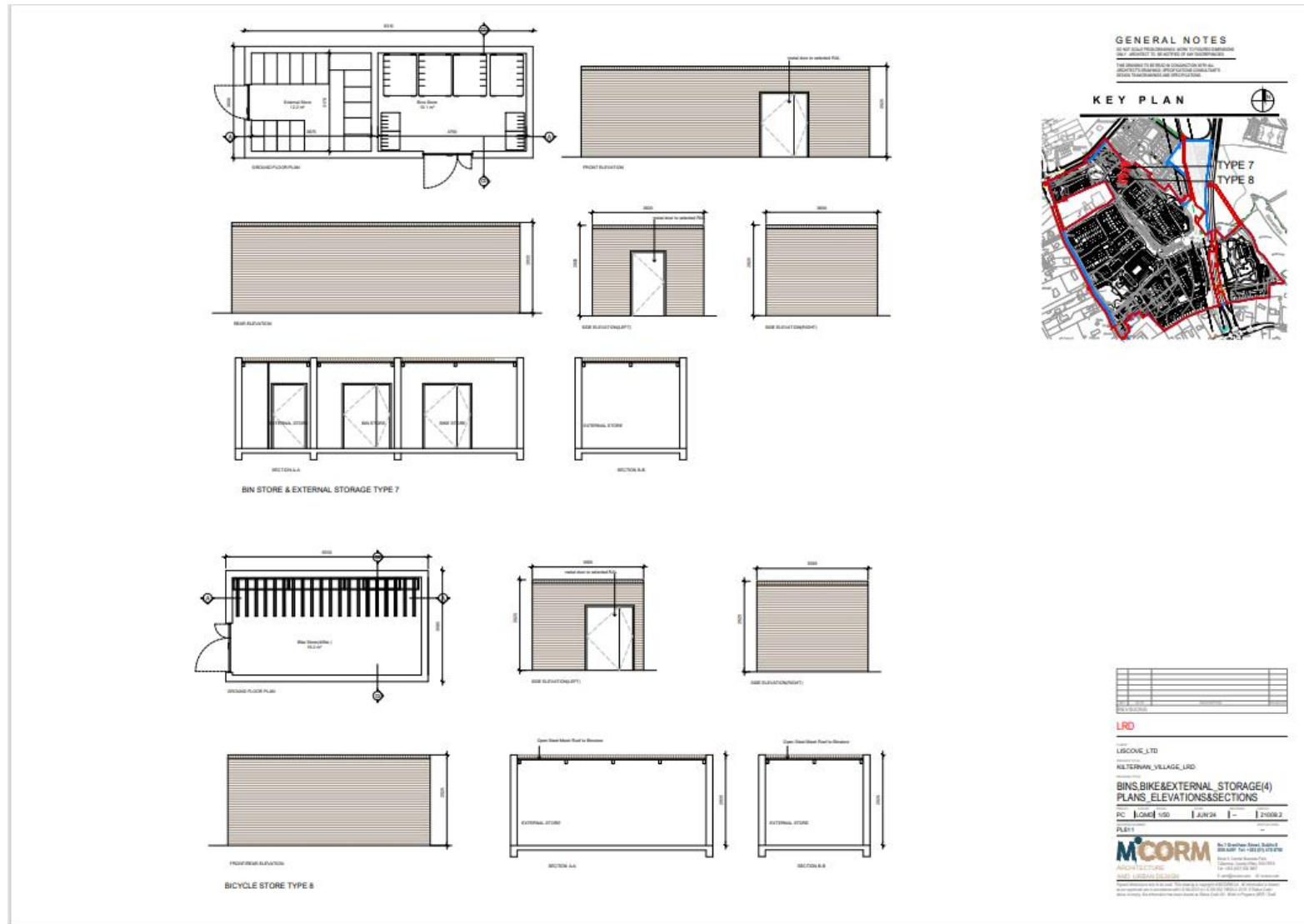


Figure 4-9 Internal Layout of Waste Storage Area Type 7 and 8

## 4.5 Other Waste Materials

Other waste materials such as bulky waste, textiles, printer toner/cartridges, WEEE and batteries and other household hazardous wastes may be generated infrequently by the occupants of the residential units. Residents will be required to suitably store these wastes within their own dwellings and dispose of them appropriately at bring centres or civic amenity facilities. Details of nearby recycling centres and bring banks is available on the Repak.ie website. All occupants will be supplied with information by the management company on the location of recycling facilities in the area.

## 4.6 Recycling Rates & Targets

The Waste Storage Areas will be provided with receptacles and signage to promote a rate of 30% of the overall waste collected to be Mixed Municipal Waste (MMW) / General Waste and 70% of waste collected recyclable waste streams which will include Dry Mixed Recyclables (DMR) (packaging, papers, cardboards, plastics, aluminium, metals, and tin) and Organic (food) Waste.

All of the Mixed Municipal Waste (MMW) collected will be transported for further recovery. All MMW will be consigned to a recovery facility where it will undergo mechanical waste recovery, or it will be consigned to a facility for energy recovery. No MMW will be transported directly to landfill.

On review of bin usage by the appointed Management Company, MMW bins may be replaced with additional Organic (food) Waste or Dry Mixed Recyclables (DMR) bins to further increase waste segregation at source.

The ratio of bins detailed in this OWMP is in line with the European Commission's proposal to introduce 70% plus re-use and recycling targets for Mixed Municipal Waste (MMW) by 2030. This waste collection proposal also provides a waste management solution that has sufficient flexibility to support future targets and legislative requirements.

## 4.7 Bin Weight Limits & Dimensions

The DLRCC bye-laws state that Waste presented for collection by a holder shall not be overloaded.

Due to the capacity of bins being provided, bins will not be overloaded and will comply with the Bye-laws.

For the shared Waste Storage Areas, it is intended to use 660L bins of 1340mm x 1200mm x 700mm and 1,100L bins of approximately 1300mm x 1000mm x 1300mm with a load capacity of no more than 240kg which will comply with IS EN 840 1997 for Dry Mixed Recyclables (DMR) and Mixed Municipal Waste (MMW), 240L bins of 1100mm x 740mm x 660mm and 140L bins of 1060mm x 480mm x 550mm will be used for Organic (food) Waste and Glass. All houses will be provided with standard sized, compliant wheelie bins from their bin provider.

All bins will be color-coded and labelled to avoid cross-contamination, green bin for Dry Mixed Recyclables (DMR), brown bin for Organic (food) Waste, black bin for Mixed Municipal Waste

(MMW) / General Waste, and blue bins for Glass (in accordance with the Waste Action Plan for Circular Economy). Use of and access to the Waste Storage Areas will be restricted to residents and waste contractors only. The Waste Storage Areas will not be visible to the public and will conform to the requirements of *BS 5906: 2005 – Waste Management in Buildings – Code of Practice*.

It is envisaged that residents of the apartments and duplexes will be subjected to a service management company service charge where waste management will be included in the fee.

## 5 WASTE COLLECTION

All collections must take place in compliance with conditions of the Waste Contractor's Waste Collection Permit for the region and in line with the Local Authority bye-laws and the Waste Management (Waste Collection Permit) Regulations 2007 as amended. All residents are obliged by law to avail of the waste management service and must comply with local bye-laws and Statutory Instruments in relation to the presentation of waste for collection. Waste collections for a four-bin system service will be available from the time of first occupancy (i.e. even if all dwellings are not occupied).

A waste collection service will be available to all occupants from first occupancy, irrespective of whether all units have been filled or not.

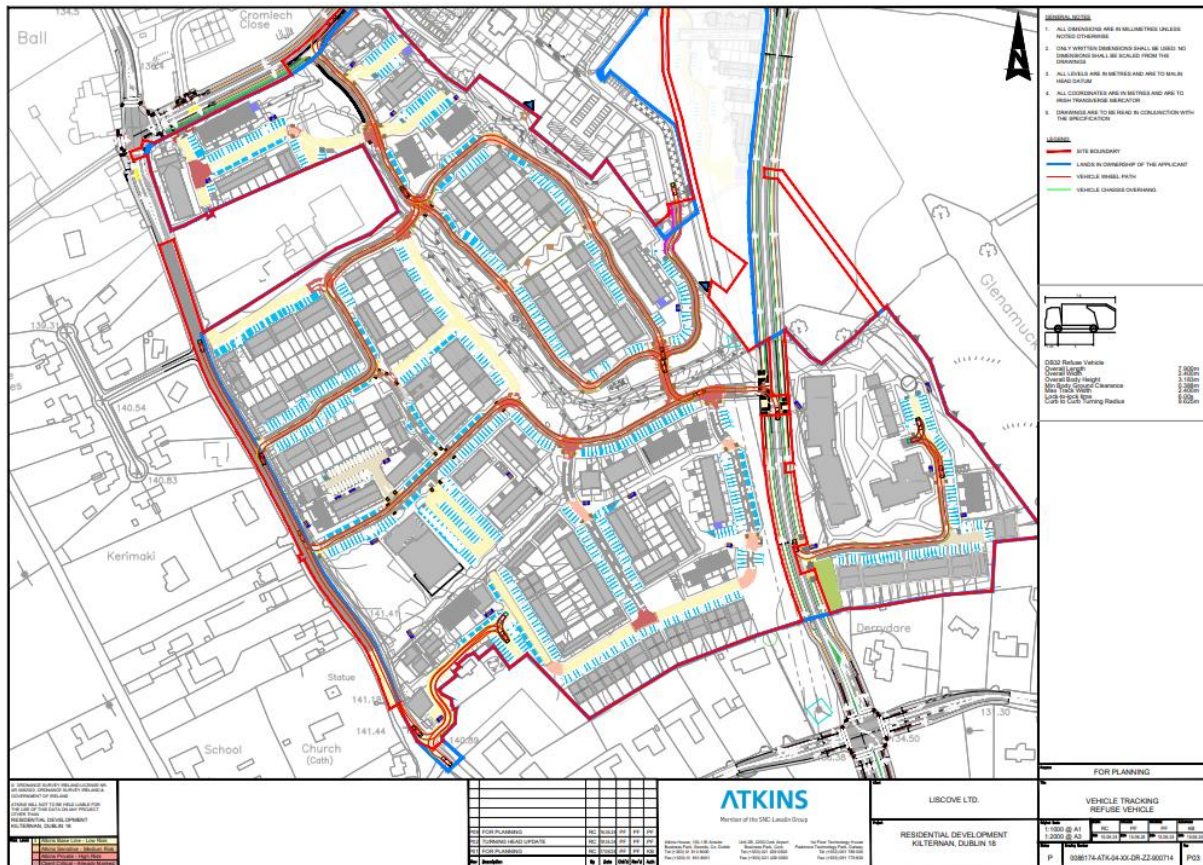
In all cases, waste collection vehicles will service the bins and the empty bins will be returned to the Waste Storage Areas. Bins will never be left outside the curtilage of the development. Access and egress of the waste collection vehicles will be in accordance with the Traffic Management Plan for the facility which has ensured the design allows for free-flowing movement of refuse collection vehicles throughout the development. BS 5906: 2005 – Waste Management in Buildings – Code of Practice has been taken into consideration when detailing vehicular access and egress to the development for the purposes of waste collection. See figure 5-1 for Swept Path Analysis.

Records of the collections from the apartments and duplexes will be maintained by the management company for the development including reports from the facilities to which the waste is taken. Residents of individual dwellings will be responsible for maintaining their own waste collection records.

All bins in the shared Waste Storage Areas will be accessible for collection by the waste management contractor. It will be the responsibility of the management company to ensure that bins are accessible for collection from the Waste Storage Areas by the waste management operatives and to assist on collection day to wheel out and replace bins during collection where required.

The staff of the Commercial facilities will be responsible for arranging their own waste collection. It is the responsibility of the Commercial facilities staff to ensure that their bins are available for collection by the waste management operatives and to that they are returned to the Waste Storage Areas following collection.

Occupants of residential houses will be responsible for placing their own bins at the kerb for collection, and for the return of those bins to the storage areas within the curtilage of their dwelling in compliance with the DLRCC Bye Laws require that bins must not be presented before 6pm the previous night nor left out post collection beyond 9am the day following the day of collection.





## **6 MANAGEMENT SYSTEM**

### **6.1 Information and Communication**

Written information will be provided by the appointed management company, to each tenant or other occupier about the arrangements for waste separation, segregation, storage, and presentation prior to collection. The information pack will also contain information about nearby recycling facilities. This information will also be included in information booklets provided to new occupants of properties on the development.

It shall be a condition of contract with the appointed management company to ensure that all residents will be provided with an information pack from the waste collection provider. This information pack will detail the waste streams that can and cannot be placed in the bins provided in the waste compound so that waste segregation is actively encouraged and the specific dates on which the bins will be collected are clearly identified.

A clause will be included in the contract with the waste collection provider to provide this information pack to new residents.

### **6.2 Waste Management Contracts**

It will be a condition of any management contract at the development that adequate budgets are in place for the provision of all required waste management services including a four-bin system for the collection of separate Organic (food) Waste, Dry Mixed Recyclables (DMR), Mixed Municipal Waste (MMW) / General Waste and Glass from the apartments and duplexes.

In addition to the requirements set out in Section 6.1 Information and Communication, the Management Company appointed will be required to continually monitor the performance of the waste management system. This will include routine visual checks of the Waste Storage Areas to ensure that all bins collected are returned to the Waste Storage Areas and to ensure this area is maintained so as not to cause any environmental nuisance to residents. These checks will also assess if the bins are in good condition or need to be replaced where damage is identified.

Provision for bin cleaning will be included in the contract with the waste management contractor appointed to ensure the provision of bin cleaning services or replacement of clean bins by the waste contractor.

The Management Company will review all annual waste reports from the Waste Collection Company appointed to ensure that the waste collected is in line with the European recycling targets. Where poor recycling rates are noted information leaflets will be recirculated to all residents which will include information on what materials can be recycled and the waste streams that can be placed in bins. Residents will also be reminded of legal obligations where applicable. Further communication strategy to engage tenants and owner occupiers in good waste management practices will be adopted if deemed necessary.

Contingency policies will be in place to ensure continuity of service.

## 7 CONCLUSIONS

By implementing design and actions outlined in this OWMP, a high level of recycling, reuse and recovery will be achieved at the development in line with European targets. Dry Mixed Recyclables (DMR) and Organic (food) Waste will be segregated at source to reduce the quantity of residual waste materials requiring off-site recovery or disposal.

The source segregation of waste types as detailed in this report will help to achieve the targets set out in the *National Waste Management Plan for a Circular Economy 2024-2030*.

The design of the Waste Storage Areas will meet the requirements as detailed in the “*Sustainable Urban Housing: Design Standards for New Apartments*”, July 2023.

## 8 REFERENCES

*Dún Laoghaire-Rathdown County Council (Segregation, Storage and Presentation of Household and Commercial Waste) Bye-laws, 2019.*

*Dún Laoghaire-Rathdown County Development Plan 2022 – 2028.*

*National Waste Management Plan for a Circular Economy 2024-2030.*

*Waste Management Acts 1996, as amended.*

*Protection of the Environment Act 2003 as amended.*

*Litter Pollution Act 1997 as amended.*

*Guidance Notes for Waste Management in Residential and Commercial Developments, Dun Laoghaire-Rathdown County Council, February 2020.*

*Waste Framework Directive (Directive 2008/98/EC of the European Parliament and of the Council of 19 November 2008 on waste).*

*European Communities (Waste Directive) Regulations 2011, S.I. No. 126/2011.*

*Waste Management (Collection Permit) Regulations 2007 (S.I. No. 820 of 2007) as amended.*

*Waste Management: Changing Our Ways, The Department of the Environment and Local Government, 1998.*

*Preventing and Recycling Waste: Delivering Change, The Department of the Environment and Local Government, 2002.*

*Taking Stock & Moving Forward, The Department of the Environment and Local Government, 2004.*

*National Strategy on Biodegradable Waste Management, Department Environment, Heritage and Local Government, 2006.*

*A Resource Opportunity – Waste Management Policy in Ireland, Department of the Environment, Community and Local Government, 2012.*

*Waste Action Plan for a Circular Economy - Ireland's National Waste Policy 2020-2025, Department of the Environment, Climate and Communications, 2020.*

*European Waste Catalogue, European Commission, 2002.*

*Waste Classification – List of Waste & Determining if Waste is Hazardous or Non-Hazardous, Environment Protection Agency, 2018.*

*Sustainable Urban Housing: Design Standards for New Apartments, Department of Housing, Planning and Local Government, July 2023.*



*Waste Management in Buildings – Code of Practice, British Standard, BS 5906:2005, 2005.*

*Mobile Waste and Recycling Containers Part 1: Containers with 2 wheels with a capacity up to 400 l for comb lifting devices — Dimensions and design, British Standard, BS EN 840-1:2012, 2012.*

*Mobile waste containers. Containers with four wheels with a capacity from 750 l to 1700 l with flat lid(s), for wide trunnion or BG-and/or wide comb lifting devices. Dimensions and design, British Standard, BS EN 840-4:1997, 1997.*

*Municipal Waste Statistics for Ireland, EPA Waste Data Release, September 25th, 2020.*



---

#### Head Office

3D, Core C, Block 71, The Plaza, Park West, Dublin 12, D12F9TN, Ireland.

Tel: +353 1 565 4730

Email: [info@enviroguide.ie](mailto:info@enviroguide.ie)

#### South West Regional Office

19 Henry Street, Kenmare, County Kerry, V93 CVH0, Ireland.

Tel: +353 646 641932

Email: [info@enviroguide.ie](mailto:info@enviroguide.ie)

#### South East Regional Office

M10 Wexford Enterprise Centre, Strandfield Business Park, Rosslare Rd, Strandfield, Kerlogue, Co. Wexford, Y35 W5RD, Ireland.

Tel: +353 1 565 4730

Email: [info@enviroguide.ie](mailto:info@enviroguide.ie)